

# 2011 Taupo “50” Yacht Race

Saturday October 23<sup>rd</sup> and Sunday October 24<sup>th</sup> 2011  
Taupo.

The Organising Authority is  
Lake Taupo Yacht Club Inc

---

## SAILING INSTRUCTIONS

---

### 1. Rules

- 1.1. The regatta will be governed by the ‘rules’ as defined in the Racing Rules of Sailing.
- 1.2. The Yachting New Zealand Safety Regulations Part 1 shall apply.

### 2. Format of Racing

- 2.1. Depending on numbers, the fleet may be split into two divisions

### 3. Schedule of Races

- 3.1.

Date	Time of First Warning Signal
Saturday 23 <sup>rd</sup> October	10:55
Sunday 24 <sup>th</sup> October Prizegiving	14:00

- 3.2. The start sequence will be:  
All in Start.

### 4. Class Flags

- 4.1. Class flags will be:

Class	Flag
Division 1	Black Pennant
Division 2	White Pennant

### 5. Racing Areas

- 5.1. The racing area will be Lake Taupo.

### 6. The Courses

- 6.1. The diagrams in Attachment A show the course, the order in which marks are to be passed, and the side on which each mark is to be left.
- 6.2. The course may be shortened due to wind conditions. The patrol boat will call on channel 77 and advise where the finish line will be laid. The patrol boat will fly code flag “S” and a Blue Flag. An orange spherical buoy will be laid to mark the outer end of the finish line.

## **7. Marks**

- 7.1. The start mark will be the race committee signal boat at the starboard end and an orange spherical buoy at port end.
- 7.2. Mark 1 is the Start Line  
Mark 2 is the 2 Mile Bay 200m Buoy  
Mark 3 is the Otuparae Point 200m Buoy  
Mark 4 is the Waitahanui 200m Buoy  
Mark 5 is Motutaiko Island  
Mark 6 is the Motuoapa North 200m Buoy  
Mark 7 is the Kuratau North 200m Buoy  
Mark 8 is Motuwharo Island  
Mark 9 is the Rangatira Point 200m Buoy  
Mark 10 is the Hole in One 200m Buoy
- 7.3. The Finish Line is the Clubhouse finish line.

## **8. The Start**

- 8.1. The starting line will be between a staff displaying an orange flag on the race committee signal boat at the starboard end and the port-end starting mark.
- 8.2. The Start Sequence will be a 5 minute start sequence as follows:
- |             |          |                          |
|-------------|----------|--------------------------|
| -5 mins     | 1 sound, | Class Flag raised        |
| -4 mins     | 1 sound  | Preparatory Flag raised  |
| -1 min      | Bell     | Preparatory Flag lowered |
| 0 min/start | 1 sound  | Class Flag lowered       |

## **9. The Finish**

- 9.1. The finishing line will be a transit taken between the Red Triangle beneath the window of the Clubhouse Control Tower and a Yellow Cylindrical Buoy marking the outer end of the finish line.
- 9.2. The Clubhouse Tower may not be manned so you are requested to take your own finish time and deposit it in a box at the main entrance to the Yacht Club.

## **10. Penalty System**

- 10.1. Appendix P will apply.
- 10.2. Rule 44.1 is changed so that the Two-Turns Penalty is replaced by the One-Turn Penalty.

## **11. Time Limits and Target Times**

- 11.1. The time limit for the race is 12:00 hrs Sunday 24<sup>th</sup> October. Boats finishing after this time will be scored DNF.

## **12. Scoring**

- 12.1. Results will be determined by corrected times using NZTYA National Ratings, July 2011.
- 12.2. Divisional winners will be determined by sorting times by division and applying points per the low points system..

## **13. Safety Regulations**

- 13.1. Boats must carry safety equipment to Category B, Part v, Section 7 of the YNZ Safety Regulations 2009-2012
- 13.2. A boat that retires from a race or returns to the launching area before she has finished the race shall notify the race committee as soon as possible on Channel 77

#### **14. Replacement of Crew or Equipment**

- 14.1. Substitution of competitors will not be allowed, unless by agreement of the Race Committee.

#### **15. Equipment and Measurement Checks**

- 15.1. A boat or equipment may be inspected at any time for compliance with safety rules and sailing instructions.

#### **16. Official Boats**

- 16.1. The Start boat will be a white cabin boat.

#### **17. Rubbish Disposal**

- 17.1. Boats shall not put rubbish in the water. Rubbish will be kept on board and disposed of after returning ashore.

#### **18. Radio Communication**

- 18.1. Except in an emergency, a boat shall neither make radio transmissions while racing nor receive radio communications not available to all boats. This restriction also applies to mobile telephones.

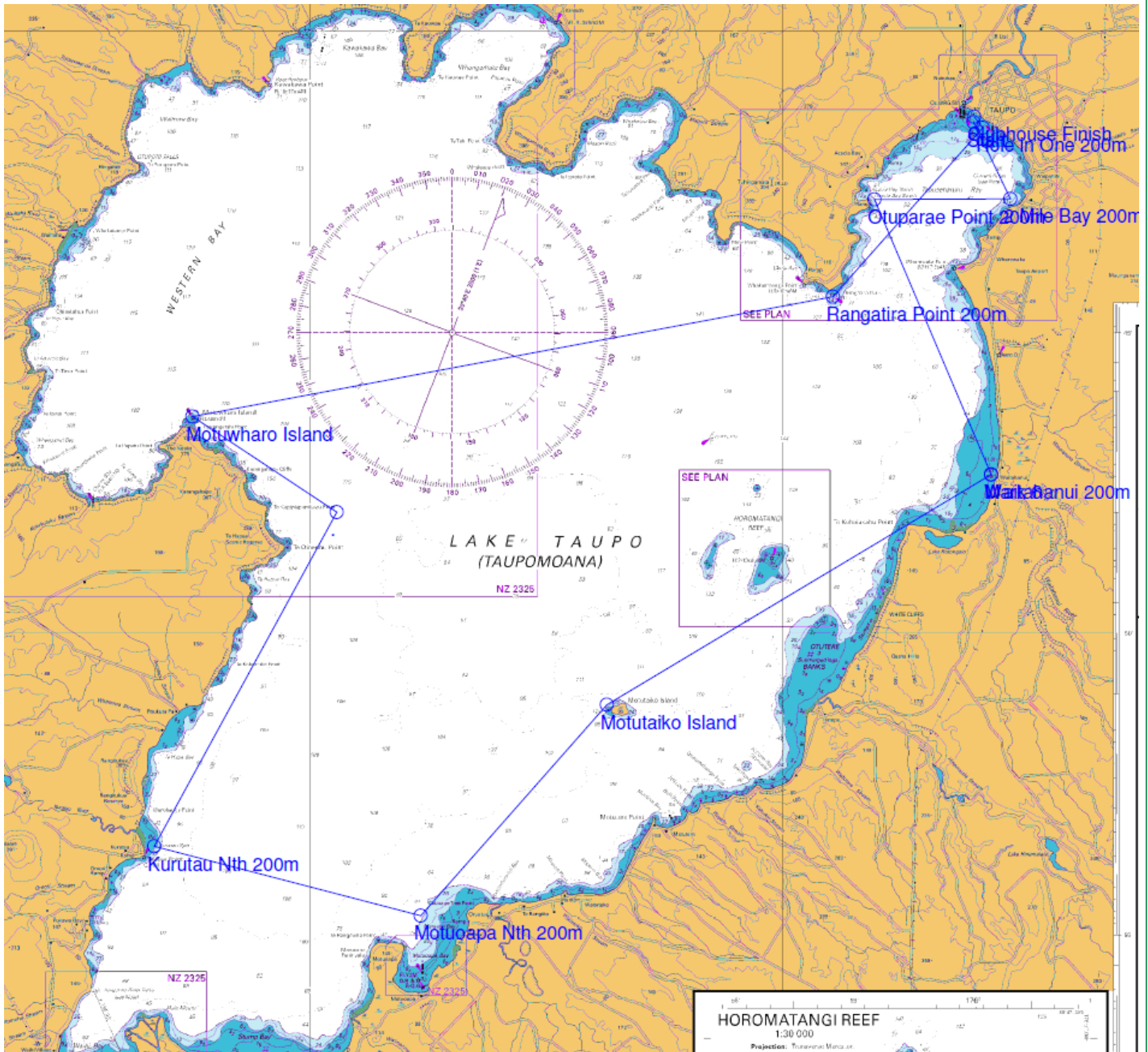
#### **19. Prizes**

- 19.1. Prizes will be awarded in the following divisions, and spot prizes will be drawn, but the winner must be present to receive a spot prize.
- Division 1
  - Division 2

#### **20. Disclaimer of Liability**

- 20.1. Competitors participate in the regatta entirely at their own risk. See rule 4, Decision to Race. It is the responsibility of each sailor, and where applicable the nominated responsible adult, to decide to participate in a race or to continue racing. By entering in the Regatta and deciding to race a competitor warrants that he or she is in good health and a competent sailor capable of racing a Trailer Yacht in open water in 30 knot winds. The organizing authority will not accept any liability for material damage or personal injury or death sustained in conjunction with or prior to, during, or after the regatta.

APPENDIX "A" – TAUPO 50 COURSE.



GPS POSITIONS

Patrol Boat Start	38°41.513'S	176°04.047'E	Start
2 Mile Bay 200m	38°42.790'S	176°04.827'E	1.4
Otoparae Point 200m	38°42.795'S	176°01.947'E	3.7
Waitahanui 200m	38°47.365'S	176°04.417'E	8.6
Motutaiko Island	38°51.185'S	175°56.284'E	16
Motuoapa Nth 200m	38°54.680'S	175°52.340'E	20.7
Kurutau Nth 200m	38°53.532'S	175°46.697'E	25.2
Motuwharo Island	38°46.400'S	175°47.510'E	34.4
Rangatira Point 200m	38°44.412'S	176°01.069'E	45.1
Hole in One 200m	38°41.607'S	176°04.243'E	48.9
Clubhouse Finish	38°41.424'S	176°04.060'E	49.1